

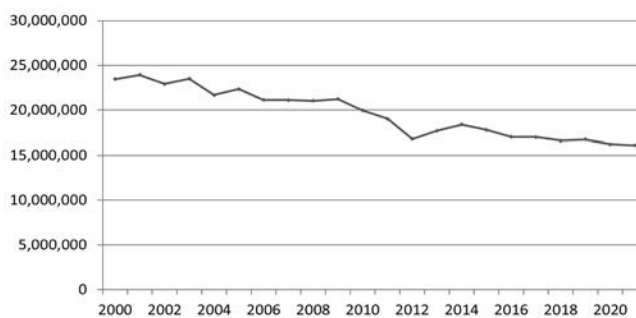


Alfalfa Acres & Research Expenditures

Alfalfa is key to sustainable agricultural systems and is an economic engine in rural communities - its value for soil conservation, nitrogen fixation, energy savings, crop rotation, and wildlife habitat is unsurpassed.

Alfalfa must offer a competitive value for farmers in order to provide these benefits and maintain or expand its acreage base. Being recognized in policy and research funding decisions is critical in keeping pace with other cropping choices.

U.S. Acreage 2002-2021 (-29.6%)



Source: National Agricultural Statistics Service (NASS)

FY '20 USDA Research Expenditures by Crop

Crop	\$million	Scientist Years	# of Projects
Wheat	55.5	73	62
Corn	48.8	87	79
Cotton	44.3	75	46
Soybean	34.7	17	62
Sorghum	16.4	26	27
Apple	12.2	21	23
Greens/leafy veg	11.9	20	28
Tomato	10.1	17	36
Alfalfa	8.0	14	18
Sunflower	3.4	6	5
Carrot	1.1	13	6
Canola	0.96	2	5

Source: Agricultural Research Information System